

FAQs:

Q. Why do you want to survey my office?

A. We want to include any part of your office or services that is accessible so that persons with disabilities can locate them.

Q. What will my participation cost me?

A. There is no charge to you for participating in this survey.

Q. What obligation does my participation put on me?

A. We are not regulators. We cannot create any more of an obligation than you already have under the law.

Q. Will I be penalized for things that are not accessible?

A. We will only be noting what is accessible and that is all that will appear on the website.

Q. Will you be reporting me to any authorities for what is not accessible?

A. No. We will be happy to share with you information on what will make you more accessible as well as information on tax credits that may help you become more accessible. However, our job is strictly to provide information and that is what we will do.

Q. What if I don't want my office to be surveyed?

A. We cannot force your participation. However, we hope you will help us so that, if any part of your office is accessible, persons with disabilities can know that.

Q. What if I add accessible equipment or change a room to make it more accessible in the future?

A. We will provide you with an email address so that you can tell us about any changes. We will then be happy to add that information to the database.



Accessible Healthcare RI

www.accessiblehealthcareri.org

email:
info@accessiblehealthcareri.org

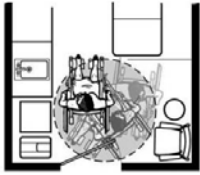
Accessible Healthcare RI

Documenting Physical Access to Healthcare for All



**An Online Source of
Information on Accessible
Healthcare in RI**

Why Accessible Healthcare RI Is Needed



60" turning circle for Wheelchairs.

Can you imagine making an appointment with a new medical provider and, once arriving at the office, finding you

cannot get in the door? Or not being able to get on the exam table? What about not being weighed through an entire pregnancy? Or being misdiagnosed because of incorrect positioning due to not being able to get on the table?

These situations are happening every single day. Healthcare providers think in terms of being helpful, but often don't think in terms of physical access.

Persons with disabilities need to know where they can go to access those medical services that they need.

What Is Accessible Healthcare RI?

Accessible Healthcare RI is a project developed by a private group of individuals that is designed to create an online searchable database of what healthcare services in RI are accessible.

Surveys will be conducted in medical facilities and private medical offices to determine which services are accessible. **ONLY** positive elements will be recorded.

When the database is completed, persons with disabilities will be able to ask questions like: "Where can I find a primary care doctor in Pawtucket that has an accessible exam table?" That person should get back a list of practices that meet that description.

While conducting surveys, we will distribute information on the requirements of the Americans with Disabilities Act and on the available tax credits for creating access.

For further information, go to www.ada.gov/medicare_ta.htm and <http://www.irs.gov/uac/Form-8826.-Disabled-Access-Credit-1>

Our Goals:

Our primary goal is to provide persons with disabilities with an online searchable database of where they can find the accessible healthcare they need.

We will accomplish this through surveying all healthcare services in RI for accessibility. Students from local colleges and universities will be visiting your office to do this survey over the next few months.

Our secondary goal is to give healthcare providers information:

Why they should become accessible; where they can get the standards for accessibility; tax credits to help them pay for barrier removal.

Our third goal is to assess what still needs to be done and what approaches, such as resource sharing, would help with that effort.

Accessible Healthcare RI

www.accessiblehealthcareri.org

email: info@accessiblehealthcareri.org